



The World Reimagined



# CITY OF LONDON TRAIL MAP

13TH AUGUST - 31ST OCTOBER 2022

Go on a Journey of Discovery through the City of London to explore our shared history and how we can make racial justice a reality.





# A JOURNEY OF DISCOVERY

To create a world that embraces the dignity of all, we must recognise a simple truth: **We are our history.**

This summer, The World Reimagined invites you on a journey of discovery to transform how we understand the Transatlantic Trade in Enslaved Africans and its impact on all of us, so that we can make racial justice a reality.

**This is not 'Black History', this is all of our history.**

This map shows you where to find our trail of Globe Sculptures. They have been created by artists with an incredible mix of approaches and styles, bringing to life themes from Mother Africa to Still We Rise and Expanding Soul.

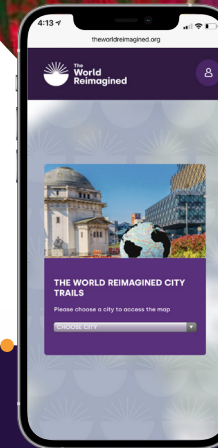
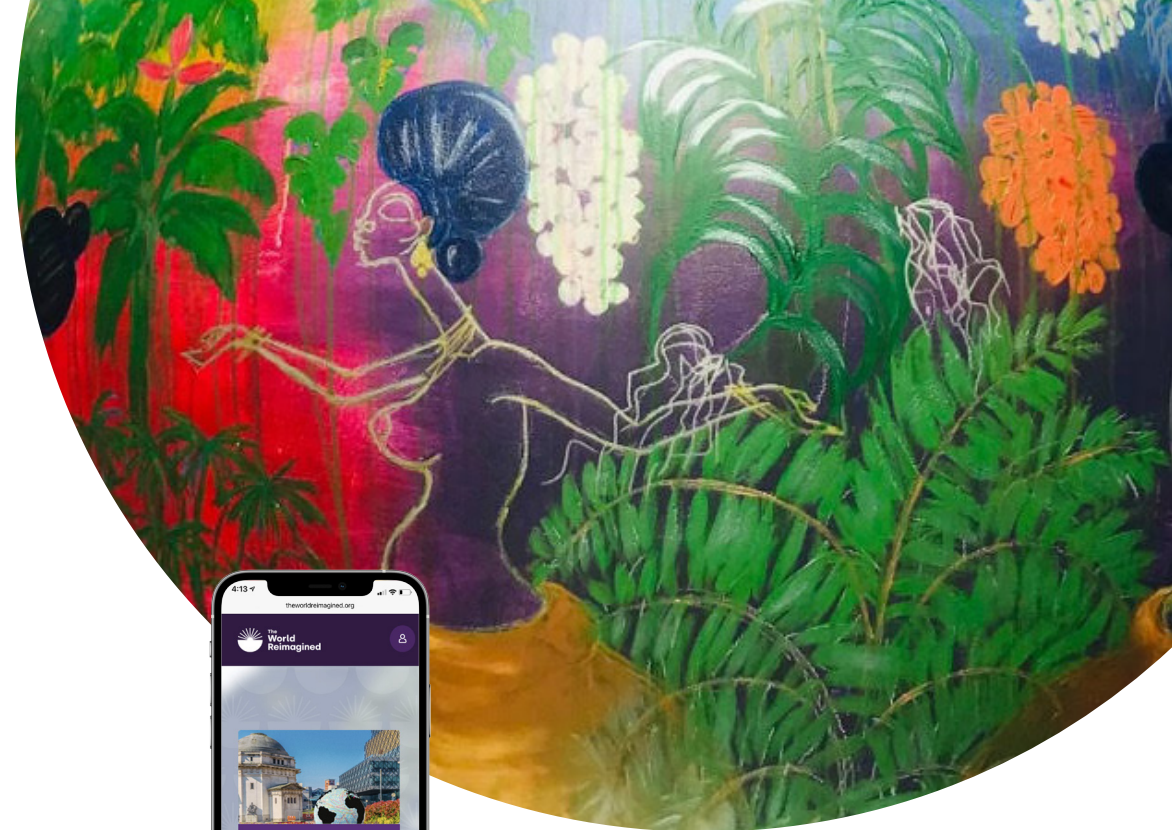
Exploring the trail is completely **FREE**.

Inspired by the vibrant, challenging and joyful art, you can also explore our online Journey of Discovery Collection to learn more about our history, present and future.

On the website, you'll also be able to:

- Find the school Globes on our online trail maps, which have been created by more than 170 schools across the UK.
- Connect with the events and activities of the incredible organisations who bring the City of London to life with the work of making racial justice a reality.

**Together, we can create a future in which all can say:  
I am seen.**



## DISCOVER MORE WITH YOUR PHONE

Use your phone's camera to scan each globe's unique QR code. It will take you to The World Reimagined portal, where you can:

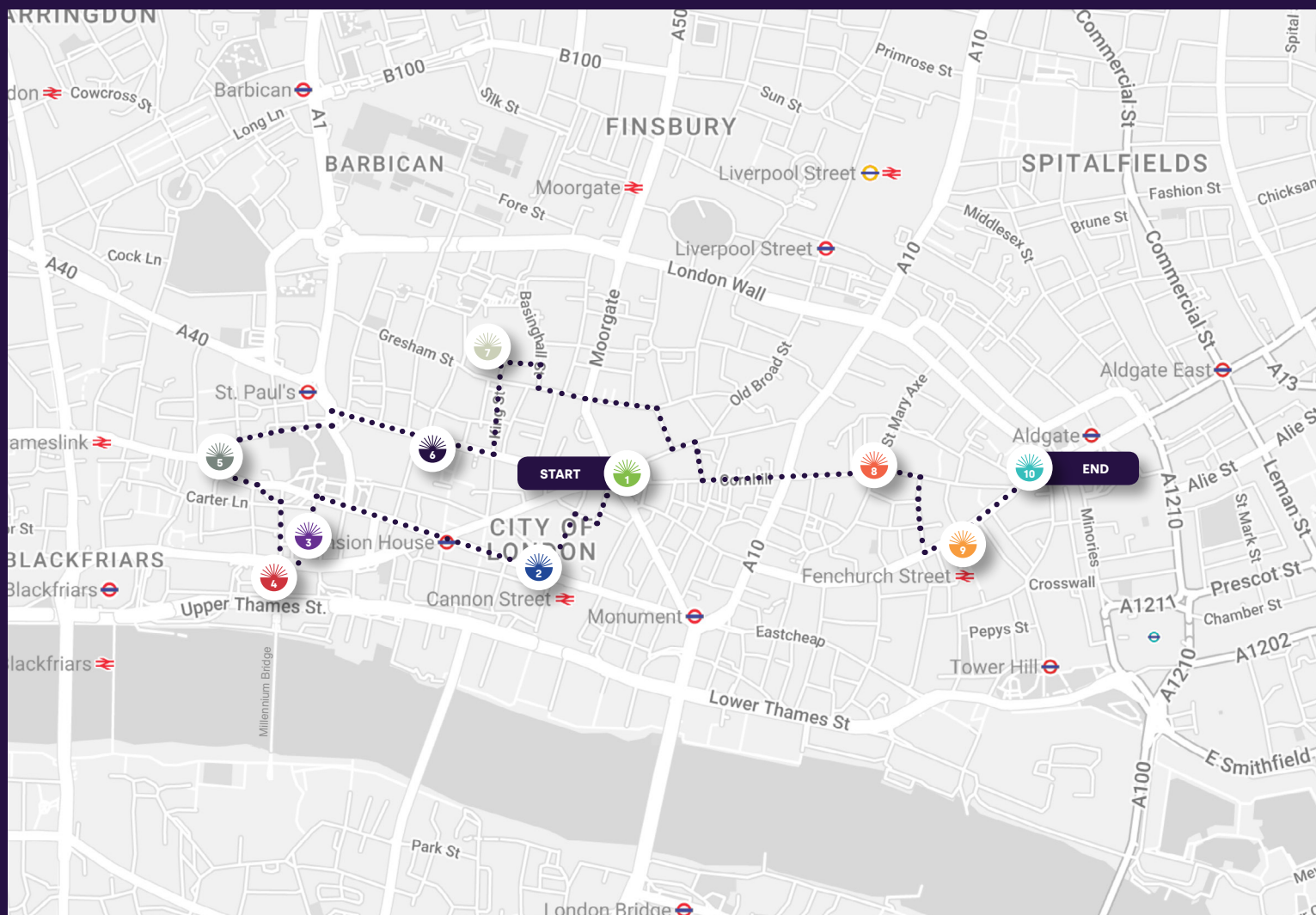
**Find** out more about the artist and their design.

**Explore** our unique Journey of Discovery history collection.

**Discover** the whole trail.

**Connect** with local events and news.

[www.theworldreimagined.org](http://www.theworldreimagined.org)



# EXPLORE THE TRAIL



**Theme:** Mother Africa  
**Artist:** Foluso Oguntayo  
**Partner:** Bloomberg  
**Location:** Bank



**Theme:** The Reality of Being Enslaved  
**Artist:** Glen Brooks  
**Partner:** Bloomberg  
**Location:** Walbrook x Cannon Street



**Theme:** Stolen Legacy: The Rebirth of a Nation  
**Artist:** Kione Grandison  
**Partner:** The World Reimagined  
**Location:** Old Change Court



**Theme:** Abolition & Emancipation  
**Artist:** Àsikò Okelarin  
**Partner:** BNY Mellon  
**Location:** Peters Hill



**Theme:** A Complex Triangle  
**Artist:** Yinka Shonibare CBE  
**Partner:** Sky  
**Location:** St Paul's Churchyard



**Theme:** City of London Community Globe  
**Artist:** Natasha Muluswela  
**Partner:** J.P. Morgan  
**Location:** Bow Churchyard



**Theme:** Echoes in the Present  
**Artist:** Curtis Holder  
**Partner:** City of London  
**Location:** Guildhall



**Theme:** Still We Rise  
**Artist:** Winston Branch  
**Partner:** Herbert Smith Freehills  
**Location:** Leadenhall x St Mary Axe



**Theme:** Expanding Soul  
**Artist:** Sarah Owusu  
**Partner:** Osborne Clarke  
**Location:** Fenchurch Street Station



**Theme:** Reimagine the Future  
**Artist:** Gil Mualem-Doron  
**Partner:** City of London  
**Location:** Aldgate Square

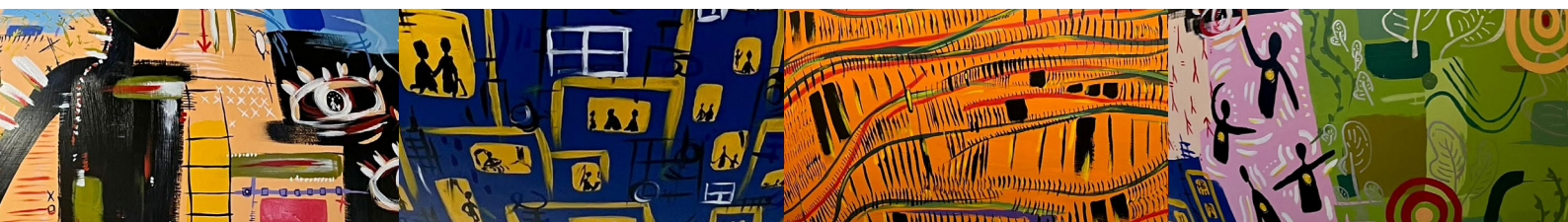
FIND | EXPLORE | DISCOVER | CONNECT  
 For more information visit [www.theworldreimagined.org](http://www.theworldreimagined.org)

#TheWorldReimagined

@TWR\_\_org



Scan Me!



OFFICIAL PRESENTING PARTNER



GREATER LONDON CITY PARTNER

J.P.Morgan

SUPPORTED BY



SUPPORTED BY



Supported using public funding by

ARTS COUNCIL ENGLAND

Bloomberg



Made possible with

Heritage Fund



Esmée Fairbairn FOUNDATION

DELIVERY PARTNER



See all of our partners at:  
[www.theworldreimagined.org](http://www.theworldreimagined.org)